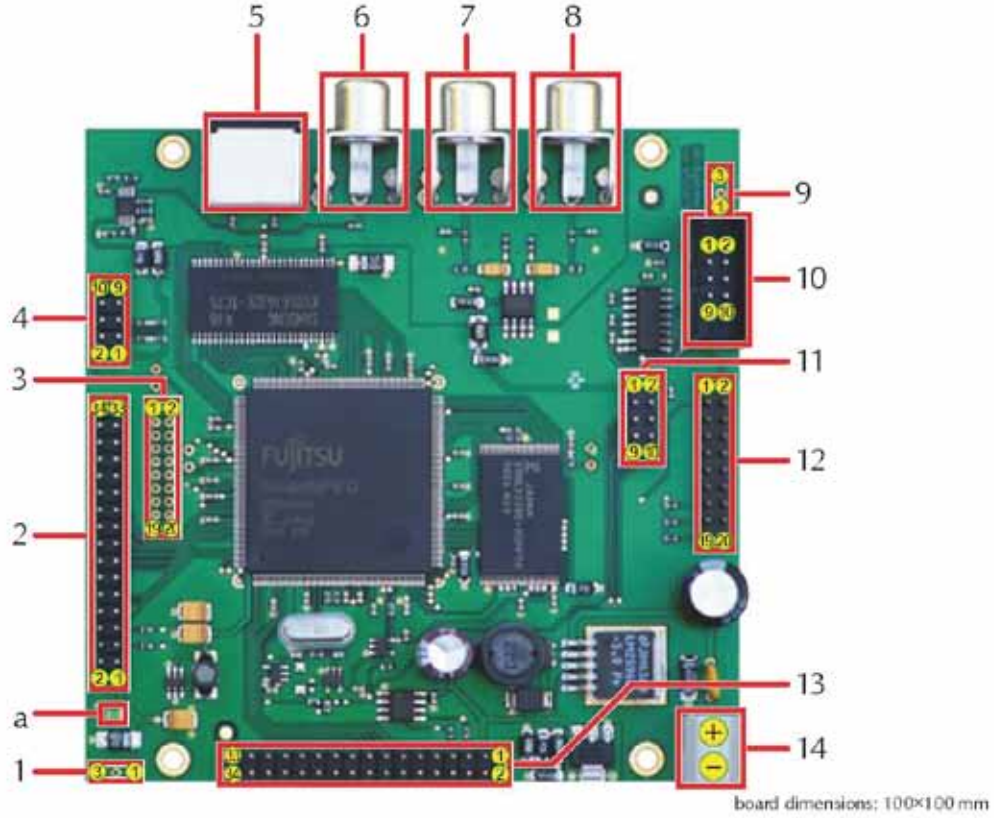


1 Connector description



Connectors	1	3pin Header	IR Diode
	2	34pin Header	Transport Stream B
	3	20pin Header	ITU 656 [in or out]
	4	10pin Header	PC Frontpanel
	5	Mini-DIN Connector	S-Video
	6	RCA Connector	Composite Video
	7	RCA Connector	Audio R
	8	RCA Connector	Audio L
	9	3pin Header	RS232 (9k6-115k2 8N1)
	10	10pin Header	RS232 (9k6-115k2 8N1)
	11	10pin Header	Debug port
	12	20pin Header	opt. RGB out + S/P-DIF
	13	34pin Header	Transport Stream A
	14	2way screw terminal	Power in (8-24 V)

LEDs	a	LED green	Power ok (5 V)
------	---	-----------	----------------



DVB MPEG DECODER

2 Pin description

1 - IR-Diode	
1	+5.0 V
3	GND
3	Signal

2 - Transport Stream B			
1	+5.0 V	2	+5.0 V
3	+5.0 V	4	+5.0 V
5	SDA	6	not connected
7	SCL	8	xReset
9	GND	10	GND
11	TSCLK B	12	PSYM B
13	not connected	14	DVAL B
15	TS B6	16	TS B7
17	TS B4	18	TS B5
19	TS B2	20	TS B3
21	TS B0	22	TS B1
23	GND	24	GND
25	not connected	26	not connected
27	not connected	28	not connected
29	GND	30	GND
31	MCLK 27 MHz	32	not connected
33	not connected	34	not connected

3 - ITU 656 (in or out)			
1	TS B0	2	GND
3	TS B1	4	GND
5	TS B2	6	GND
7	TS B3	8	GND
9	TS B4	10	GND
11	TS B5	12	GND
13	TS B6	14	GND
15	TS B7	16	GND
17	PSYM B	18	DVAL B
19	TSCLK B	20	+5.0 V

4 - PC Frontpanel			
1	+5.0 V	2	+5.0 V
3	SDA	4	SDA
5	SCL	6	SCL
7	Reset-In	8	IRQ
9	GND	10	GND

9 - RS232	
1	TxD
3	TxD
3	GND

10 - RS232			
1	con. with 4+6	2	TxD
3	RxD	4	con. with 1+6
5	GND	6	con. with 1+6
7	RTS	8	CTS
9	not connected	10	GND

10 - Debug Port			
1	+5.0 V	2	+3.3 V
3	DB-Clk (27 MHz)	4	GND
5	DB-In	6	GND
7	DB-Out	8	GND
9	not connected	10	GND

12 - opt. RGB out + S/P-DIF			
1	+5.0 V	2	+3.3 V
3	IR-In	4	GND
5	S/P-DIF	6	GND
7	AF out (right)	8	GND
9	AF out (left)	10	GND
11	CVBS or Y	12	GND
13	Chroma	14	GND
15	Red	16	GND
17	Green	18	GND
33	Blue	34	GND

13 - Transport Stream A			
1	+5.0 V	2	+5.0 V
3	+5.0 V	4	+5.0 V
5	SDA	6	not connected
7	SCL	8	xReset (f.E.*)
9	GND	10	GND
11	TSCLK A	12	PSYM A
13	not connected	14	DVAL A
15	TS A6	16	TS A7
17	TS A4	18	TS A5
19	TS A2	20	TS A3
21	TS A0	22	TS A1
23	GND	24	GND
25	SD Out (f. E.*)	26	PLL THR (f. E.*)
27	SDCLK (f. E.*)	28	SD In (f. E.*)
29	GND	30	GND
31	MCLK 27 MHz	32	ASCLK (f. E.*)
33	RST Vid. Codec	34	not connected

*f.E. = for Encoder

14 - Power input	
+	8-24 V DC
-	GND

Errata/corrections:

20.03.2008 - coloured TS connectors